



HBE-B 1000V DC 150A-500A

Class of Operating: aR

保护特性: aR



Standard/ 标准: IEC 60269.4, GB/T 13539.4, UL 248-13

INTERRUPTING CAPACITY / 分断能力:

50,000 A at 1000V DC

TECHNICAL PARAMETERS/ 技术参数:

PART NO. 目录编号	CURRENT RATING 额定电流	SAFETY APPROVALS 安全认证		
		CCC	CE	TUV
HBE-B150	150A	●	●	●
HBE-B175	175A	●	●	●
HBE-B200	200A	●	●	●
HBE-B225	225A	●	●	●
HBE-B250	250A	●	●	●
HBE-B300	300A	●	●	●
HBE-B350	350A	●	●	●
HBE-B400	400A	●	●	●
HBE-B500	500A	●	●	●

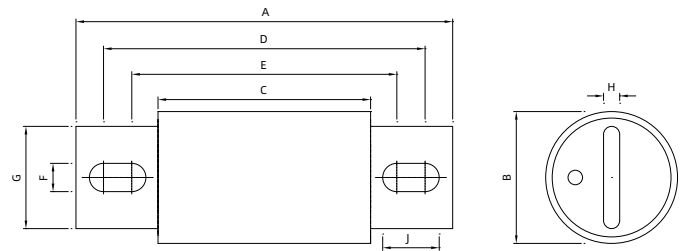
● DENOTES FOR APPROVAL
○ DENOTES FOR PENDING

● 表示已取得安全认证
○ 表示正在申请安全认证

Dimensions/ 尺寸:

Unit 单位: mm

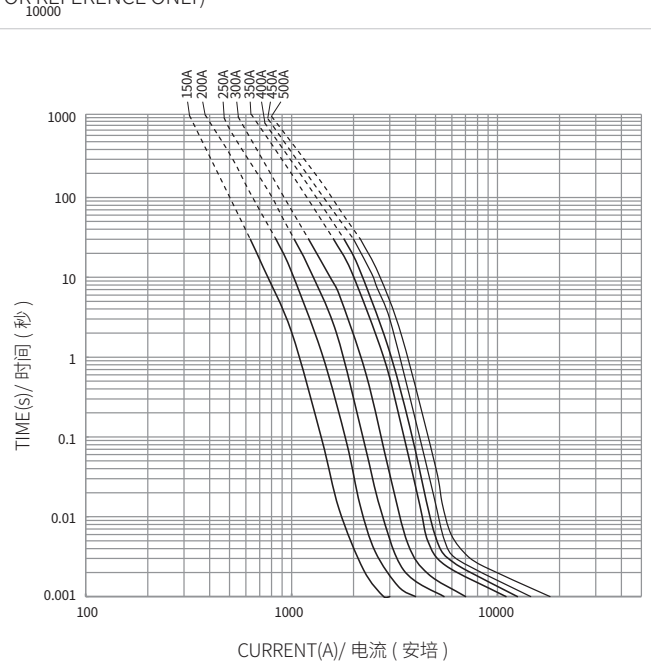
Type:HBE-B Part No.: HBE-B(amp rating)



HBE-B 平均 I-T 曲线图 (仅供参考)

AVERAGE I-T CHARACTERISTICS CURVE

(FOR REFERENCE ONLY)



CATALOG NUMBER	A	B	C	D	E	F	G	H	J
HBE-B150to500	140	49	79	119.5	98.5	10.5	38	6	21